

The Sycamore

3 bedroom home with ensuite

953 sq.ft.



Ground floor

Lounge

3377mm x 4677mm 11'0" x 15'4"

Kitchen / Dining

514mm x 2975mm 18'1" x 9'9"

WC

1000mm x 1925mm 3'3" x 6'3"

First floor

Bedroom 1

3291mm x 3428mm 10'9" x 11'2"

Ensuite

2458mm x 900mm 8'0" x 2'11"

Bedroom 2

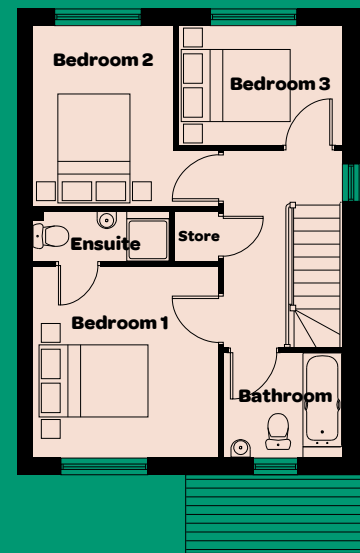
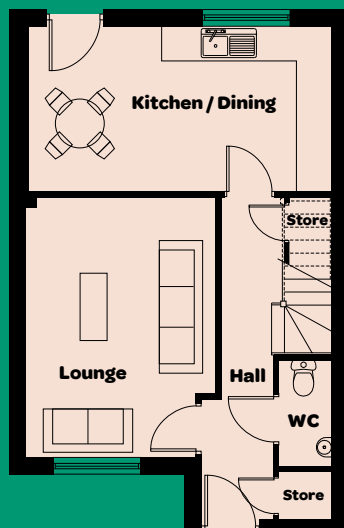
2463mm x 3250mm 8'1" x 10'8"

Bedroom 3

2963mm x 2150mm 9'8" x 7'0"

Bathroom

2134mm x 1890mm 7'0" x 6'2"



All properties are freehold.

0151 256 0900 [parklandsliving.co.uk](https://www.parklandsliving.co.uk)

Plans are not drawn to scale. Room layouts are provisional, sizes are approximate and are for illustration purposes only and do not form any part of a contract. Elevations may vary, images are for illustration purposes only.

 Parklands