

# The Maple

3 bedroom home with ensuite

1124 sq. ft.



## Ground floor

**Lounge**  
3666mm x 5127mm 12'0" x 16'8"

**Kitchen / Dining / Sitting\***  
5851mm x 2975mm 19'2" x 9'9"

**WC**  
1000mm x 1935mm 3'3" x 6'4"

\*5000mm into sitting room area

## First floor

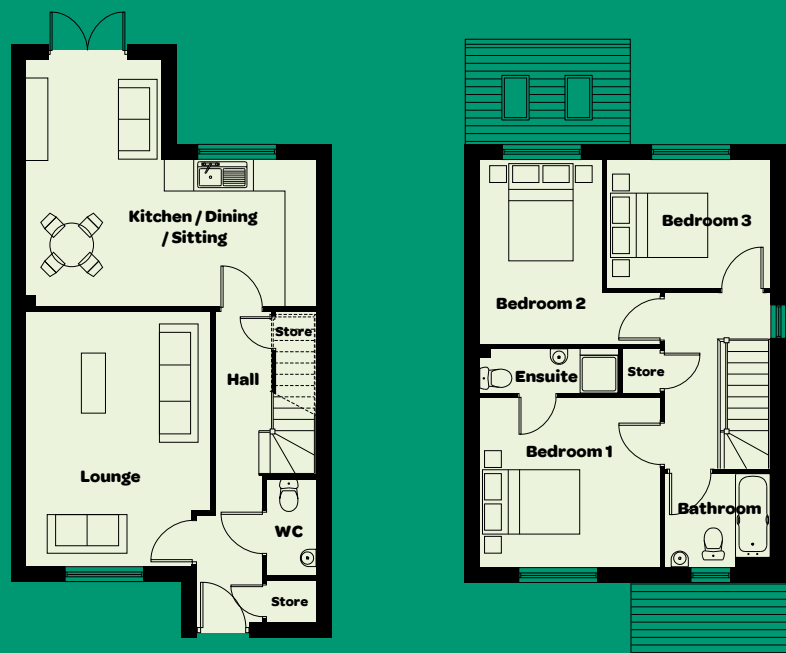
**Bedroom 1**  
3663mm x 3463mm 12'0" x 11'4"

**Ensuite**  
2800mm x 900mm 9'2" x 3'0"

**Bedroom 2**  
2480mm x 3688mm 8'1" x 12'1"

**Bedroom 3**  
3283mm x 2600mm 10'9" x 8'6"

**Bathroom**  
2100mm x 1900mm 6'10" x 6'2"



All properties are freehold.

0151 256 0900 [parklandsliving.co.uk](https://www.parklandsliving.co.uk)

Plans are not drawn to scale. Room layouts are provisional, sizes are approximate and are for illustration purposes only and do not form any part of a contract. Elevations may vary, images are for illustration purposes only.

 **Parklands**